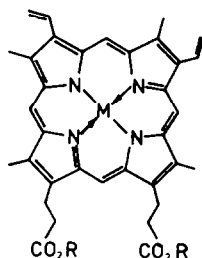


APPENDIX: TETRAPYRROLE STRUCTURES

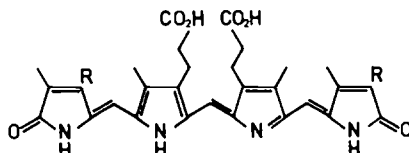
To avoid multiple reproduction of common complex structures, these are summarised here with structure numbers beginning with the letter L. These structures may be referred to in this way in any of the foregoing contributions.

Porphyrin Structures

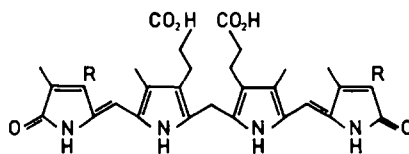


- (L1) M = 2H, R = H Protoporphyrin (Protoporphyrin IX)
 (L2) M = Fe(II), R = H Protoferrohaem (Haem IX)
 (L3) M = Fe(III)Cl, R = H Protohaemin (Haemin IX)

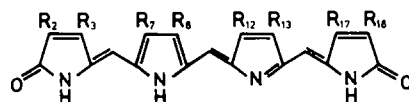
Linear Tetrapyrrole Structures



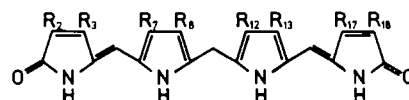
- (L4) Biliverdin (Biliverdin IX α), R = -CH=CH₂
 (L5) Mesobiliverdin (Mesobiliverdin IX α), R = Et



- (L6) Bilirubin (Bilirubin IX α), R = -CH=CH₂
 (L7) Mesobilirubin (Mesobilirubin IX α), R = Et



	R ₂	R ₃	R ₇	R ₈	R ₁₂	R ₁₃	R ₁₇	R ₁₈
(L8) Biliverdin IX β	Me	P	P	Me	Me	Vn	Me	Vn
(L9) Biliverdin IX γ	P	Me	Me	Vn	Me	Vn	Me	P
(L10) Biliverdin IX δ	Me	P	P	Me	Vn	Me	Vn	Me
(L11) Biliverdin III α	Vn	Me	Mc	P	P	Me	Me	Vn
(L12) Biliverdin XIII α	Mc	Vn	Me	P	P	Me	Vn	Me
(L13) Octaethylbilindione	Et	Et	Et	Et	Et	Et	Et	Et
(L14) Name and R groups as specified in text								



- (L15) Bilirubin IX β , R groups as (L8)
 (L16) Bilirubin IX γ , R groups as (L9)
 (L17) Bilirubin IX δ , R groups as (L10)
 (L18) Bilirubin III α , R groups as (L11)
 (L19) Bilirubin XIII α , R groups as (L12)
 (L20) Name and R groups as specified in text

Numbering of Linear Tetrapyrroles